

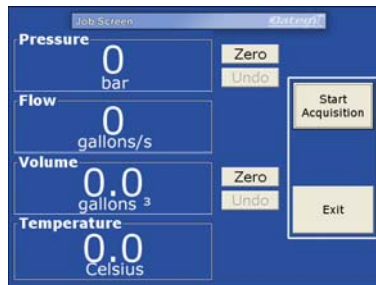
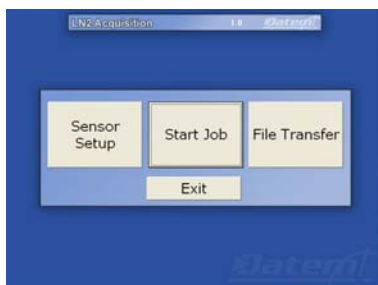
Touch Panel Acquisition System

- Custom built to suit
- 4-20mA Inputs: Max. 8
- Pulse Input: Max. 4
- Quadrature Input: Max 4
- Panel Mounted Touch Screen PC
- Microsoft Windows Operating System
- USB or Ethernet Output
- Easy To Use and Fully Customizable Acquisition Software
- Stainless Steel Enclosure
- IP65 Rated
- Data Record Function



Technical Specification

Typical Size	300(mm) x 300(mm) x 120(mm)
Typical Weight	10kg
User interface	6.4" to 8" typical
Input Device	Touch Screen Entry
Operating System	Microsoft Windows XP based
PC Specification	512Mb RAM typical
Storage Device	Solid State Hard Disc 8Gb typical
Input Voltage	12 or 24Vdc
Current	2A @ 24Vdc
Data Rate	Up to 20Hz
Current Loop Accuracy	0.1% typical



Datem, your perfect partner for Engineering Solutions

Call us on +44 (0)1526 322666 or
 E-mail sales@datem.co.uk

